

PART OF N.W. 1/4 OF
SECTION 29, T.7N., R.1W., S.L.B. & M.

51-2

IN NORTH OGDEN CITY & NORTH OGDEN DISTRICT

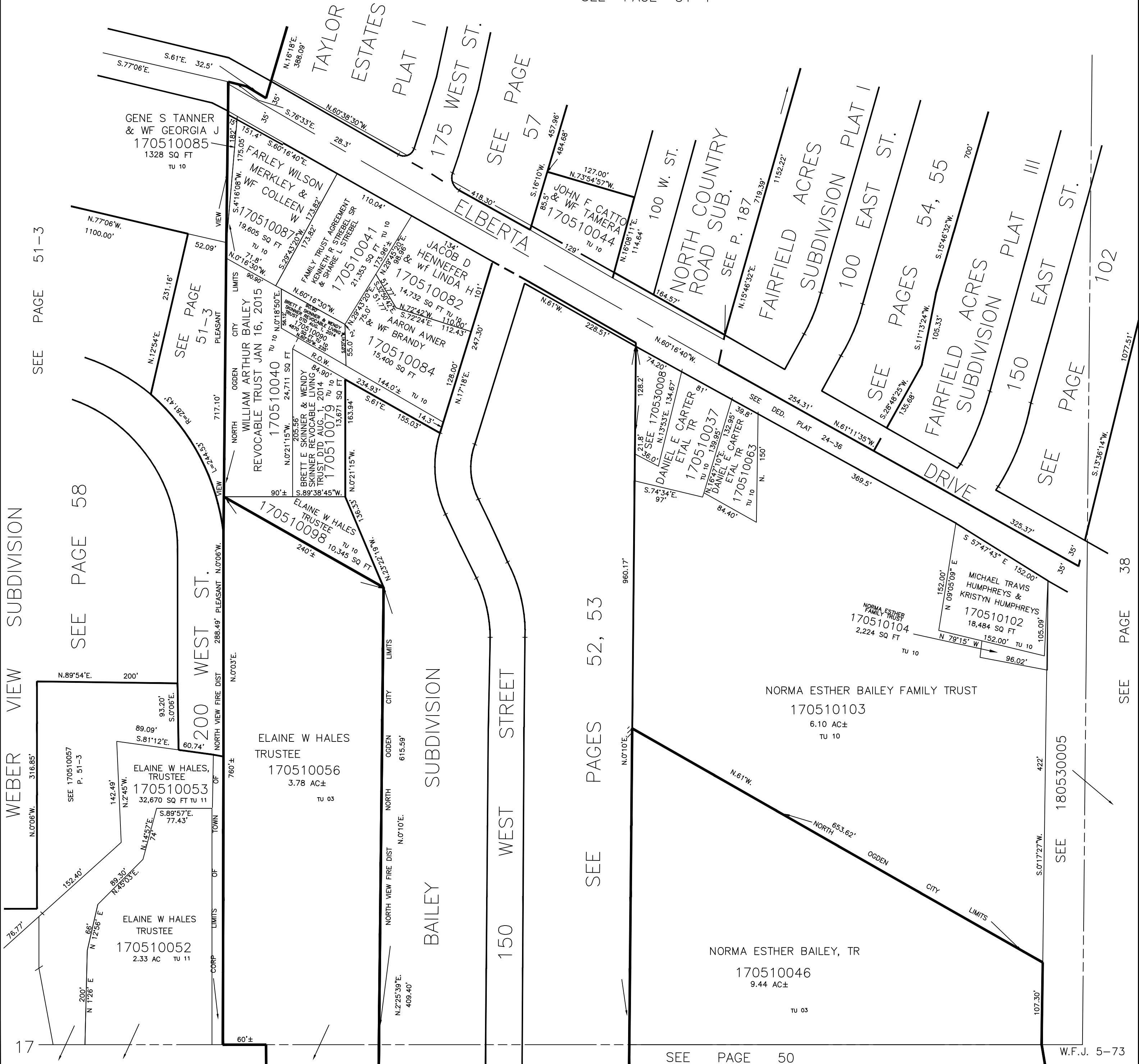
TAXING UNIT: 03, 10

SCALE 1" = 100'

PREFIX: 17-051

ALSO SEE PAGES 51-3, 4

SEE PAGE 51-1



SEE PAGE 51-3

SEE PAGE 58

WEBER VIEW SUBDIVISION

TAYLOR
ESTATES
PLAT I

SEE PAGE
57

NORTH COUNTRY
ROAD SUB.

FAIRFIELD ACRES
SUBDIVISION PLAT I

SEE PAGES
54, 55

FAIRFIELD ACRES
SUBDIVISION

150 EAST ST.

100 EAST ST.

102

SEE PAGE 38

SEE PAGES 52, 53

BAILEY SUBDIVISION

150 WEST STREET

200 WEST ST.

17

SEE PAGE 50

W.F.J. 5-73

SEE 180530005